

M2M INDUSTRIAL ROUTER



- » 2 x SIM, 1 x LAN, 1 x WiFi
- » Supply : 24V DC
- » Ingress Protection : IP30
- » Operating Temp.: -30°C ~ +75°C



CONNECTIVITY



INDUSTRIAL GRADE



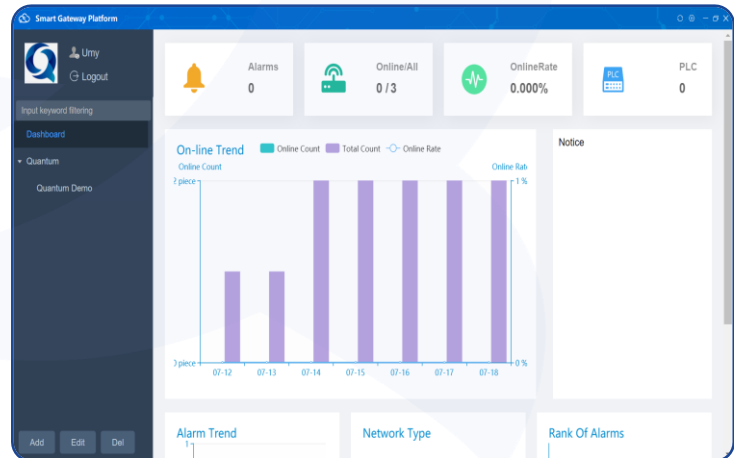
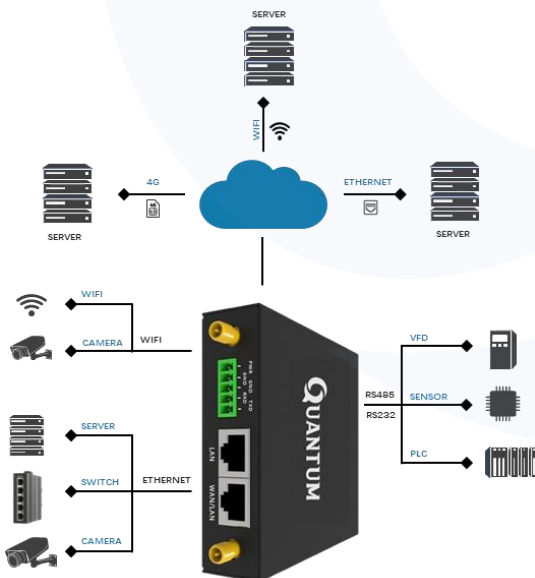
DIN RAIL MOUNT



HIGH & LOW TEMPERATURE RESISTANCE

Industrial Router is an IoT wireless communication router with the compact design and cost-effectiveness. It is using public cellular network GPRS/CDMA/WCDMA/ EVDO/LTE to provide long distance, wireless and large data transmission function for users. The product has been widely used in the M2M industry of the IoT industrial chain, such as smart grid, intelligent transportation, smart home, finance, and etc.

USER FRIENDLY UTILITY TO ACCESS YOUR DEVICE



KEY FEATURES

- » Standard RS232/RS485, ethernet and WIFI interface, can be connected to the serial device, ethernet devices and WIFI devices
- » Support various network protocols including TCP/IP, UDP, FTP (optional), HTTP & MQTT
- » Support 802.11 b / g / n WIFI network, support WIFI AP, AP Client, Bridge and various working mode (optional)
- » Support dual-link intelligent switching function between primary card and backup card
- » Support remote management, SYSLOG, SNMP, TELNET, SSHD, HTTPS, etc.
- » Intelligent data terminal, automatically enter transmission status after power-on

TECHNICAL PARAMETER

Cellular Specification

Standard and Band	Support FDD-LTE B1/B2/B3/B4/B5/B7/B8/B28 Support TDD-LTE B38/B39/B40/B41 Support TD-SCDMA: B34, B39 Support HSPA+/UMTS B1/B2/B5/B8 Support EV-DO: BC0 CDMA 1x: BC0 Support EDGE/GPRS/GSM 850/900/1800/1900MHz
Bandwidth	FDD-LTE: Downstream rate 150Mbps, uplink rate 50Mbps TD-LTE: Downstream rate 130Mbps, uplink rate 35Mbps TD-HSPA+: Downstream rate 4.2Mbps, uplink rate 2.2Mbps DC-HSPA+: Downstream rate 42Mbps, uplink rate 5.76 Mbps HSPA+: Downstream rate 21Mbps, uplink rate 5.76 Mbps UMTS: 384Kbps
Transmit Power	< 23dBm
Sensitivity	< -97dBm

WIFI Specification

Standard and Band	IEEE802.11b/g/n
Bandwidth	IEEE802.11b/g: 54Mbps (Maximum) IEEE802.11n: 144Mbps (Maximum)
Security	Support WEP, WPA, WPA2 encrypt methods, optional WPS function
Transmit Power	15 ± 2dBm
Sensitivity	< -72dBm @ 54Mbps

Hardware System

CPU	Industrial-grade CPU
Flash	16MB, 128MB (Optional)
DDR2	128MB



TECHNICAL PARAMETER	
Interfaces	
WAN Interface	1 x 10/100M RJ45 ethernet port, adaptive MDI/MDIX, built-in 15KV ESD
LAN Interface	1 x 10/100M RJ45 ethernet port, adaptive MDI/MDIX, built-in 15KV ESD
Serial	1 x RS232/485 serial interface with built-in 15KV ESD Data bits:5, 6, 7, 8 bits Stop bits:1, 1.5 (Optional), 2 bits Error detection: none, even parity, odd parity, SPACE (optional) and MARK (optional) Serial Port Rate: 2400~115200bits/s
LED Indicators	"PWR", "Online", "LAN", "WAN/LAN", "WIFI"
Antenna Interface	Cellular: Standard SMA female antenna interface, characteristic impedance: 50 Ω WIFI: Standard SMA male antenna interface, characteristic impedance: 50 Ω
SIM/UIM Slot	Standard SIM card slot, support 1.8V/3V SIM/UIM card, built-in 15KV ESD, support dual-SIM card (Optional)
Power Interface	Standard 3.5mm terminal block interface, with built-in phase-reversal and over-voltage protection
Reset Button	Can reset router's configuration to default factory setting by this button
Power	
Input Voltage	DC 12V/1.5A
Accepted Range	DC 5~36V
Power Consumption	
Standby	95~135mA@12VDC
Communicating	165~220mA@12VDC
Physical Properties	
Casing	Metal casing, IP30 protection level, suitable for most industrial control applications.
Dimensions	93 x 89 x 24mm (excluding antennas and mountings)
Weight	250g (500 gm Gross)
Environment	
Operating Temperature	-35~+75°C
Storage Temperature	-40~+85°C
Relative Humidity	95% (non-condensing)
Part No.	QT-R100



DIMENSIONS

